



# WELCOME TO PLEXAL

---

WORK. GROW. THRIVE.



# WE COULDN'T BE MORE EXCITED TO HAVE YOU IN OUR COMMUNITY!

---

As Plexal members you'll be surrounded by innovators who are passionate about collaboration and solving some of the biggest challenges facing society.

This is your guide to life at Plexal.

And remember: we want to collaborate with you. Let us know if you have an idea for how we can work with you or support your growth journey!

## CONTENTS

---

1. The Plexal portal
2. The Plexal team: here to help
4. Eating and drinking guide
5. Member events: what's on
6. Member benefits
7. Exclusive access
8. The practical stuff
9. Finding your way around Plexal
13. Plexal innovation





# THE PLEXAL PORTAL

---

The Plexal Portal is your destination for:

- seeing who's here and messaging fellow members
- registering visitors
- buying guest passes
- booking meeting rooms
- raising IT or facilities queries
- accessing your membership terms and conditions

Access it here [plexalportal.com](https://plexalportal.com)



# THE PLEXAL TEAM

---

First - the community team. Our community heroes are based on our reception desk, they are your first port of call for just about everything:

- community events or projects
- introductions to members
- access card enquires
- post collection/delivery
- connecting with the Here East campus
- learning more about Plexal's innovation programmes and services

Drop by the desk and say hello or get in touch with them at [community@plexal.com](mailto:community@plexal.com)

## MEET YOUR COMMUNITY TEAM



**Manuela Sardano**  
Community Manager



**Rheanna Pierre-Davis**  
Community Associate Lead



**Paris Habib**  
Community and Events Associate



**Monica Cheung**  
Community and Analytics Associate



**Dave Clayton**  
Community and Sales Associate



## OTHER IMPORTANT PEOPLE TO KNOW



**Jake Ellis**

Head of Technology



**Reece Morris**

Operations and Project Manager



**Haaris Sarmad**

IT Systems Engineer



**Zoltan Kolozsvari**

Facilities Assistant

## IT AND FACILITIES

Our facilities team can help with temperature adjustments, lighting, furniture adjustments or electrical ports around Plexal.

Our IT team can sort out issues with WiFi, printing, AV or anything IT-related.

Whatever you need, log it via [the portal helpdesk](#) and we'll get on the case.

## MARKETING, PR AND CONTENT | [communications@plexal.com](mailto:communications@plexal.com)

We love hearing our members news, stories and events. Please help us amplify your social channels, feature in our newsletters, be spotlighted in our Members' Nights and other events for networking opportunities. We can also make introductions to the marketing teams at Here East, Queen Elizabeth Olympic Park and other local businesses to raise your profile.

## INNOVATION SERVICES | [innovation\\_services@plexal.com](mailto:innovation_services@plexal.com)

To learn about our consultancy business to see if there are programmes to help your business grow.

## WORKSPACE SALES AND CONTRACTS | [community@plexal.com](mailto:community@plexal.com)

Desk, office pricing or contract enquiries and referrals to Plexal.

## FINANCE | [accounts@plexal.com](mailto:accounts@plexal.com)

Billing, direct debits and all payment enquiries.



# YOU'RE ON THE HERE EAST CAMPUS

Here East is located in London's Queen Elizabeth Olympic Park. They invite innovators, disruptors, visionaries and like-minded people to share – and participate – in the making of game-changing innovations.

Not only that! There's plenty going on all over the campus. Here are some of our top picks of where to eat and drink. There's also a Tesco Express 2 minutes walk away, and a Sainsbury's Local over the bridge for groceries.



## CANALSIDE

With Breakfast Club, Randys Wing Bar and Gotto's Italian seasonal cooking you are spoiled for choice if you fancy lunch out.



## LMA Canteen

The Kitchen at LMA on campus has recently re-opened and is now serving breakfast, lunch, and snacks throughout the day.



## SAINT ESPRESSO

Enjoy an all day brunch menu, tasty take-away lunches and locally roasted coffee.



## CHANGE PLEASE, THE YARD

Award-winning coffee, pastries and drinks served up with a smile from an upcycled truck.



## HACKNEY BRIDGE

Street food vendors, bars, cafes, local independent retailers.



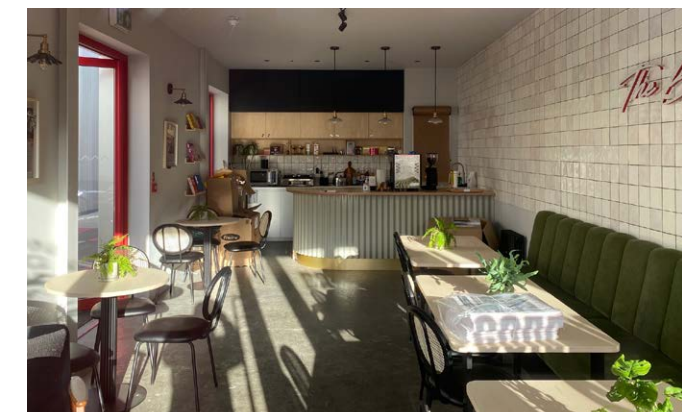
## STREET FOOD, THE YARD

Wood-fired pizza to Caribbean cuisine and everything in between.



## LOCK INN, CANALSIDE

Lock Inn is our proper neighbourhood pub offering great home-cooked food, cocktails and beers. A favourite of the Plexal team!



## BADU CAFE, HACKNEY BRIDGE

Coffee, cakes and freshly made sandwiches, BADU Cafe takes the traditional cafe concept and does something amazing for the community.



# MEMBER EVENTS

From panel debates and cyber meetups to parties to remember, Plexal members enjoy events every week. Make sure you're [signed up to our newsletter](#) to keep up to date on everything going on.

## LOOK OUT FOR

- 

Women in Business
- 

Plex-all meetups
- 

Seasonal & Christmas parties
- 

Members Night
- 

Breakfast on us
- 

Cyber meetups
- 

Lunch & learns

## COMMUNITY EVENT HIGHLIGHTS



Gaming at  
Plexal



Plex-all: a series  
dedicated to celebrating  
diversity and inclusion



Cyber Lates: a series of  
meetups for technology  
and cyber security



International Women's  
Day panel: Innovation  
and technology for  
gender equality



Knowledge Bite: a  
series of roundtables  
run by members for  
members.

If there are any events you'd like to see in our calendar, or if you'd like to partner with us and run a workshop, get in touch with [community@plexal.com](mailto:community@plexal.com)



# MEMBER BENEFITS

---



## DEDICATED COMMUNITY TEAM

From party planning and IT troubleshooting to making introductions for you, our community team are here to help.



## COMMUNITY EVENTS

An exciting events programme that makes you want to come into work!



## MENTORING

All founders get one-to-one time with our leadership and innovation team to help you make connections and supercharge your growth.



## COMMUNITY RESPECT CHARTER

These principles outline our commitment to inclusion and creating an environment in which our members can thrive.



## PLEXAL SHOREDITCH

Discounted rates at Plexal Shoreditch. Plexal members can book a desk for £15 a day or meeting rooms from £20 per hour. Book on the [Plexal Portal](#).



## WORK FROM AROUND THE WORLD

All members get free five-day passes for workspaces at our partners SHACK15 in San Francisco, Hub8 in Cheltenham and Capital Factory in Austin, Texas.



## AWS CREDIT OFFER FOR MEMBERS

Get \$10,000 in AWS Activate Credits, 1 year of AWS Business Support, and 80 credits for self-paced labs.



## ONE TIME FREE 30-MINUTE HUBSPOT CONSULTATION

Digital BIAS uses their proprietary ARISE™ framework to optimise your go-to-market strategy, including positioning, messaging and value proposition, through revenue operations utilising the latest AI on HubSpot and Salesforce.



# EXCLUSIVE ACCESS

---



## CANALSIDE RESTAURANTS

Don't forget to flash your Plexal pass to get a discount at the bars and restaurants along Canalside.



## HUBSPOT

Apply to receive the Startup Friendly Pricing to HubSpot's growth stack software package (All-in-one CRM, Sales, Marketing, and Services plans).

[Apply here](#)



## DISCOUNT ON BETTER GYMS

Click "corporate" in the drop down menu.

Get started [here](#)



## THE STRATFORD HOTEL

### 15% off Best Flexible Rate

This discount is for a room only with complimentary wi-fi, access to the 24 hour gym, and more.

Discount available [here](#) with code: PLEXAL2024



## BALSAMIQ

### 120 day extended free trial

A user-friendly wireframing tool that simplifies the process of creating visual mockups for digital interfaces, enabling rapid prototyping and efficient communication of design concepts.

[Sign up here](#)



## NOTION

### 6 months free

Notion is a powerful all-in-one workspace tool that allows individuals and teams to organize their thoughts, tasks, and projects in a flexible and customizable manner.

Submit an application [here](#)



## MONDAY.COM

### 20% off

Monday.com is a versatile and intuitive project management platform that streamlines collaboration, organization, and tracking of tasks, allowing teams to work efficiently and effectively.

Apply for the discount via [this form](#)



## HYATT REGENCY LONDON STRATFORD

### Up to a 20% off bar rates

Discount for bookings made from Jan 31 - March 31 for any stay in 2024, with free breakfast and more perks included.

Book [here](#) using company name PLEXAL and code: 0186793



# THE PRACTICAL STUFF

---

## OPENING TIMES

### Monday to Friday: 6am to 12am

From 6am to 8am, and from 6pm-12am you'll need your membership card to open the front doors.

### Weekends & bank holidays: 10am-6pm

You'll need your membership card to open the front doors.

## GETTING TO PLEXAL

We're a short walk from Hackney Wick overground station, and a free shuttle bus runs from Stratford International and Stratford Underground to Here East.

For shuttle times and all cycling, driving, walking and public transport directions, go to our location page: [plexal.com/find-us](https://plexal.com/find-us)

## WORKSPACE LOCKERS, SHOWERS AND BIKE RACKS

We've got plenty of lockers in our workspace for Fixed and Hot desk members, and we've also got lockers, showers and bike racks on floor -1 if you're cycling or working out, there are also electric scooter parking and charging.

## FIRE SAFETY

The assembly point is in The Yard outside the Press Centre. If you have an office, you should have at least one dedicated fire warden, there are also dedicated Plexal fire wardens who sweep the entire centre.

## BOOKING IN GUESTS

If you've got a guest, we ask that you register them on the Plexal Portal so the reception teams at Plexal and Here East know they're coming. We'll check them in when you arrive and you will get a notification. Guests are welcome for meetings or up to three hours, for anything more please buy a day pass.

**You can buy day or week passes on the portal for:**

- contacts who will be working from Plexal for a day or more
- suppliers carrying out work for you

## POST PROCESS

The post will be collected by the community team on a weekday afternoon (not including bank holidays).

For offices: We will hand deliver your post to your office and if no one is in we will drop off any letters/parcels and leave them on the closest desk to your door.

For Hot/Fixed deskers: You'll receive a notification for any parcels we receive on your behalf. Visit the community team to collect them and any letters. Please note you'll only receive notifications for parcels.

If you're sending business post, just leave it with the community team before 4:30pm with the right postage.



# PRINTING SET UP

---

You'll find printers along the high street or on the upper mezzanines, we'll charge the cost of printing to your account and invoice your company at the end of the month.



Print  
Station



## HOW TO SET UP PAPER CUT

---

You will receive your welcome email from Papercut containing your username and password.

[Click this link](#) to log in and download the PaperCut printing software.

Follow the on-screen instructions to setup the printers on your device.

When you print you'll see that there are four queues with different finishing options to choose from:

PlexalPrint Double Sided BW

PlexalPrint Double Sided Colour

PlexalPrint Single Sided BW

PlexalPrint Single Sided Colour

You'll now be able to print, copy and scan. Head to any of the printers and tap your door access card on the reader to get started.



# DO YOUR BEST WORK AT PLEXAL

---

We've got everything you need to do quiet work when you need, find a room to duck into for a call or deliver a big pitch or meeting in a space with the wow factor.

## HOT DESKS

Hot desk members can sit up on the red mezzanine, Monument Square and Plexal Park, (see next page for map).

Monument Square has been optimised for accessibility and features improved acoustics and noise reduction for people who might find it disorientating to work in a noisy environment and 32 height-adjustable desks.

## MEZZANINES

This is where you'll find our Fixed desk members.

## PLEXAL PARK AND BLEACHERS

Eat your lunch, do some work or have a meeting in our indoor park and bleachers.

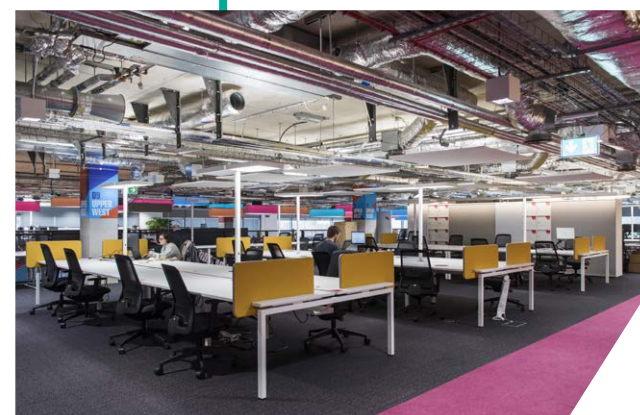
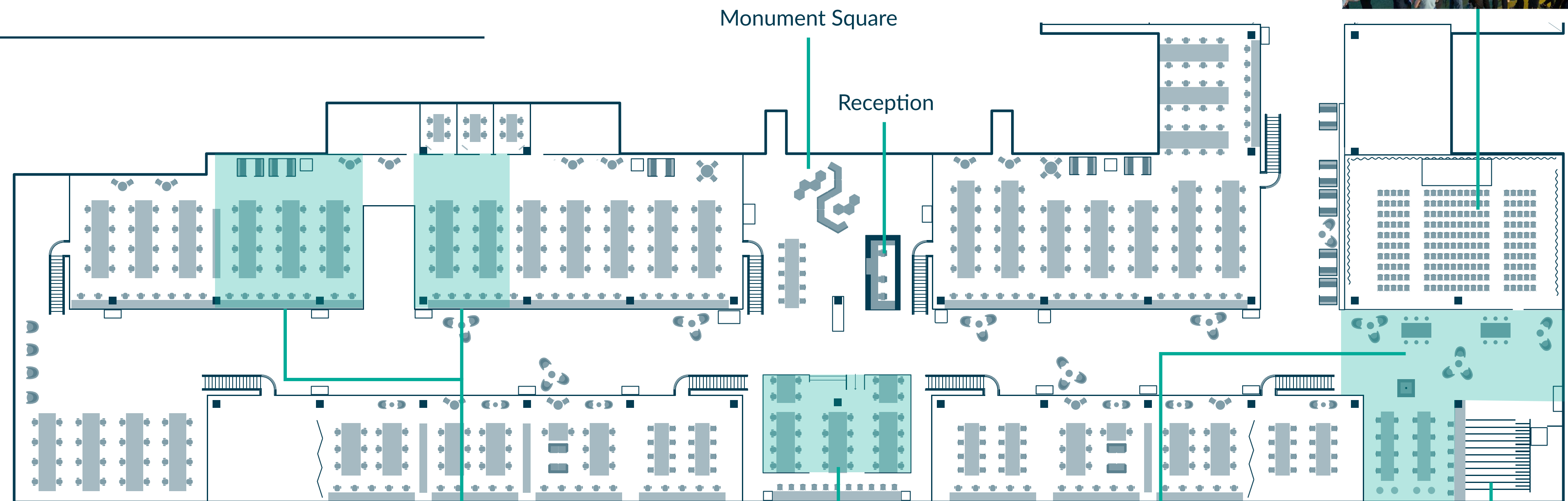
## MEETING ROOMS, PODS AND PHONE BOOTHS

You can pay to book meeting rooms on the Plexal Portal. Or, dive into one of our many impromptu meeting pods or phone booths if they're free. Please be mindful of your fellow members and keep the time to 30 minutes max.



# PLACES FOR INNOVATION

Centre Stage and Plexal Park event space



Red Mezzanine hotdesking



Monument Square hotdesking



Plexal Park



Bleachers



# PRIVATE PLACES TO WORK

## MEETING PODS

All of our meeting pods are free and bookable for up to 60 minutes. If you need longer you can pay £10 per hour. They can be booked up to 24 hours in advance.

The others are drop-in, please try to keep this to no more than 30 minutes so everyone can use them.

## PHONE BOOTHS

These are available around the building, free to use and available for drop ins. Respect your members and keep these to 30 minutes where possible.

## MEETING ROOMS

We have a range of meeting rooms from 4 person to our 20 person Lynn Boardroom.

Please book these in advance on the Plexal Portal where you'll find the applicable costs.





# INNOVATION AT PLEXAL

---

Plexal is the innovation company solving society's challenges through collaboration with government, startups and industry.

We're closing the gap between organisations – small and large, local and global, private and public – and working towards a common goal: using science and technology to deliver national security and prosperity.

We regularly work with our exciting community, connecting them with government departments and corporate companies to work on the next innovative idea.

Get in touch about our consultancy services, to learn how we can support your business to grow and which programmes are available for you to apply for: [connect@plexal.com](mailto:connect@plexal.com)

Some of the amazing partners we've worked with:





# OUR STORY SO FAR...

2017



Plexal launches during London Tech Week 2017

2018

**LORCA**

Appointed by DCMS to establish the London Office for Rapid Cyber Security Advancement (LORCA)



Plexal partners with Lloyds Banking Group to deliver LBG's cyber innovation strategy

2019



Foreign, Commonwealth & Development Office

Plexal partners with FCDO to build digital and cyber capacity in Oman

2020

**LORCA**

**>£150M  
EQUITY  
RAISED**

LORCA becomes the largest cyber accelerator in Europe

2021

National Cyber Security Centre  
*For Startups*

Plexal becomes innovation partner to the NCSC

Launches NCSC for Startups



Plexal partners with IBM and AWS to accelerate mission-related emerging technologies

**CYBER  
RUNWAY**

Plexal establishes Cyber Runway - the UK's largest and most inclusive accelerator program

2022

**ACE** | Powered by **vivace**

Partnered with QinetiQ to deliver The Home Office Accelerated Capability Environment

**dishMCR**

Plexal launches the Greater Manchester Digital Innovation and Security Hub (DiSH)

2023

**hub8**  
by plexal

Plexal acquires a majority shareholding in Cheltenham-based cyber and tech co-working space Hub8





**THAT'S A WRAP.. NOW GO FORTH  
AND LIVE YOUR BEST PLEXAL LIFE!**

Connect with us

**in Plexal**

 **@plexalcity**

 **@plexalcity**